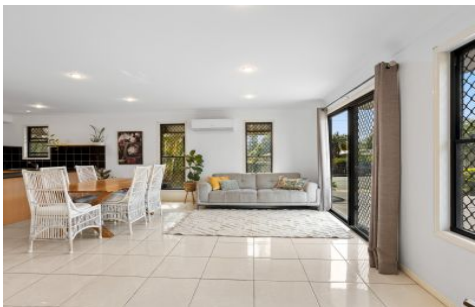


WILLCOX



1/45 Beale Street Southport QLD

3 3 2

Situated in an elevated position in trendy Southport, you will find this well maintained neat and tidy two storey townhouse offering a spacious floorplan with plenty of natural light throughout. Offering an easy maintenance lifestyle, located only a stroll to the Chirn Park precinct and Broadwater Parklands, this stylish and spacious living townhouse provides an abundance of natural light.

View : <https://www.willcoxestateagents.com.au/sale/qld/gold-coast/southport/residential/townhouse/7380540>

Beautifully presented, this home offers 3 generous sized bedrooms each with their own ensuite and french doors that open to their own private balcony. A spacious modern kitchen with stone bench tops, dishwasher and induction cooktop. A private rear courtyard with mature palms for evening drinks also suitable for your all pets. Remote control security gates with intercom, auto internal access garage and extra parking space for a 2nd car, boat or jet-ski.



Rhys Gordon
0407 000 749



Jesse Willcox
0403 039 167

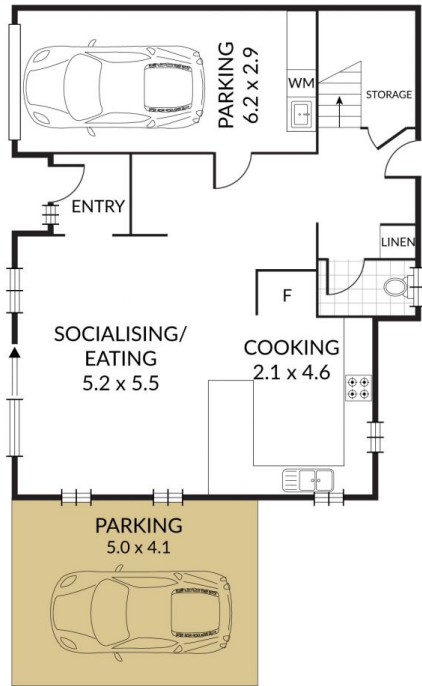
<https://www.willcoxestateagents.com.au>

Internal 172m² External 29m² Total 201m²

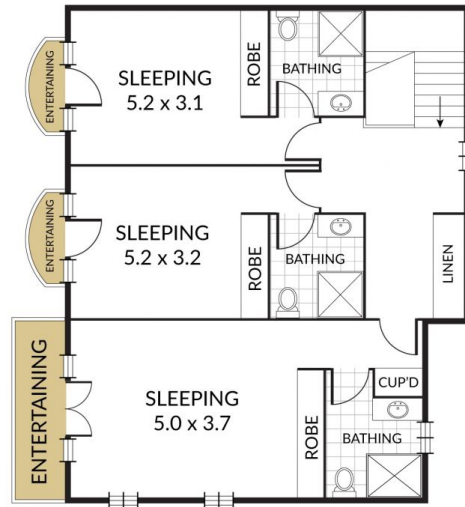
1/45 Beale Street, **Southport**



3 x 3 x 2 x



GROUND FLOOR



FIRST FLOOR

NOTE: Every precaution has been taken to verify the accuracy of the above details. However, prospective purchasers are advised to make their own enquiries.