

WILLCOX



50 King Charles Drive Sovereign Islands QLD

5 🚗 6 🚗 9 🚗

AutoHaus Sovereign Islands

On Offer:

A synergistic bold mansion for aficionados of luxury cars, a cylindrical masterpiece that manifests a reflection of self, your identity, your reward for years of distillation of your craft.

Harmoniously designed to enhance the views from its point position this imposing residence merges modern essentials with luxury high-end finishes to provide the homeowner with an environment of compelling serenity.

The gentle inclusion of cylindrical architecture is carried throughout the four floors of the home ensuring consistency and dedication to design to make this home a modern masterpiece.

Price : \$6,900,000
Building Size : 590 sqm
Land Size : 702 sqm
View : <https://www.willcoxestateagents.com.au/sale/qld/gold-coast/sovereign-islands/residential/house/7241589>



Christina James
0403 039 167

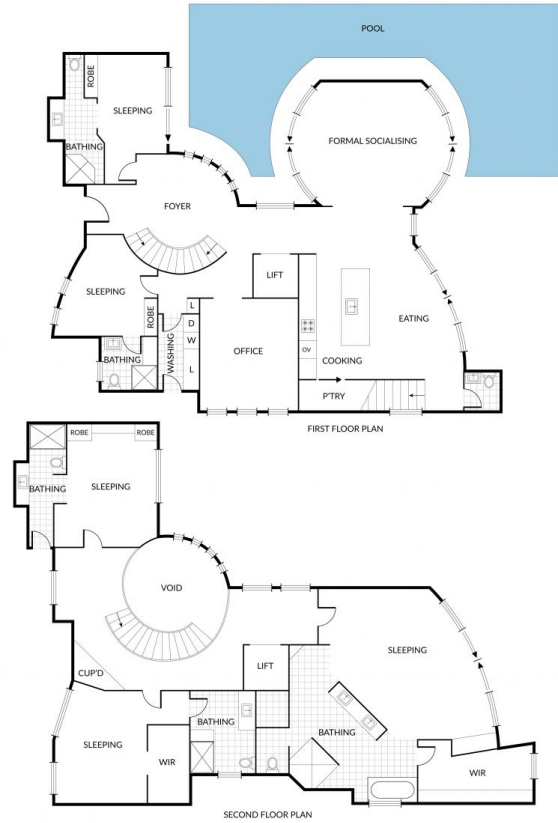
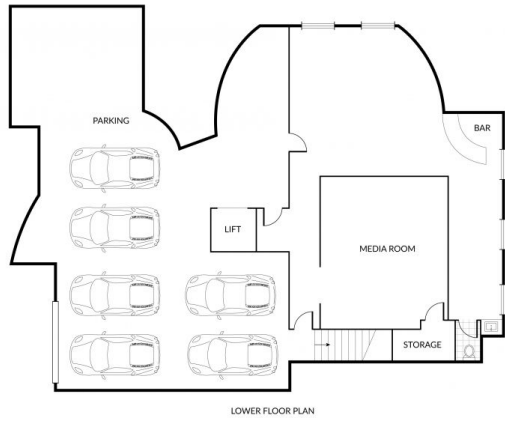
<https://www.willcoxestateagents.com.au>

Internal 520m² External 70m² Total 590m²

50 King Charles Drive, Sovereign Islands



5 x 6 x 6 x



NOTE: Every precaution has been taken to verify the accuracy of the above details. However, prospective purchasers are advised to make their own enquiries.