




# WILLCOX



## 14 Brooke Avenue Southport QLD

3  1  2 

Central Chirn Park location, character home retaining its original charm and a private, tropical backyard with pool - this is an easy living option for those wanting to move into this highly sought-after pocket.

Elevated and capturing Broadwater breezes, the original two bedroom house includes a massive deck overlooking the grounds of this spacious 640sqm block with plenty of underhouse parking and storage.

â€¢ 2 bedrooms and study area or 3rd bedroom with built ins

â€¢ Modern kitchen with stone benches and dishwasher

â€¢ Beautiful timber floors, air conditioning

â€¢ High ceilings with original ornate corncicing

â€¢ French doors open to decks front and rear

â€¢ Private backyard with established gardens and fenced

**Price** : \$ 540,000

**Land Size** : 640 sqm

**View** : <https://www.willcoxestateagents.com.au/sale/qld/gold-coast/southport/residential/house/5865994>

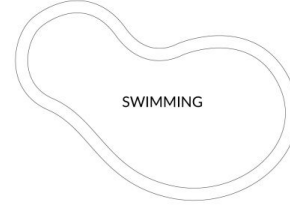
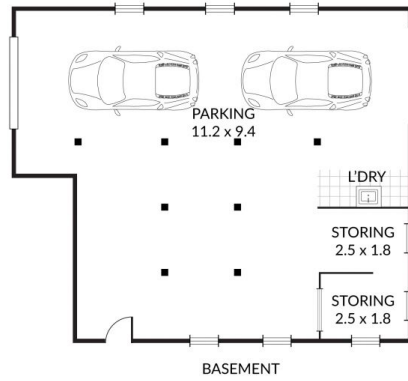
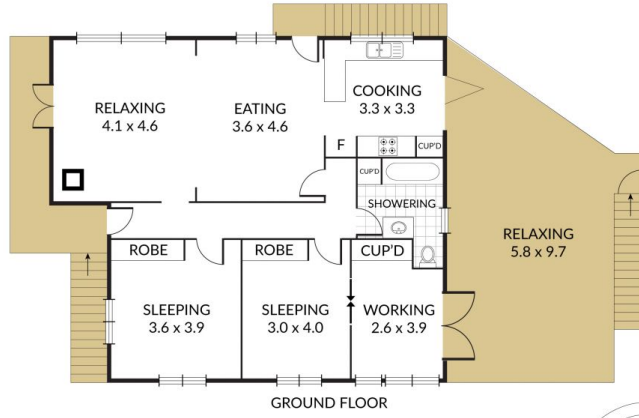
<https://www.willcoxestateagents.com.au>

Internal 224m<sup>2</sup> External 86m<sup>2</sup> Total 310m<sup>2</sup>

14 Brooke Avenue, **Southport**



2 x 1 x 2 x



NOTE: Every precaution has been taken to verify the accuracy of the above details. However, prospective purchasers are advised to make their own enquiries.