

# WILLCOX



## 58 Slatyer Avenue Bundall QLD

4  3  2 

Centrally located in the Gold Coast, close to shops, schools, transport, universities, hospitals and Southport Golf Club, this double storey family residence holds endless opportunities. Generously proportioned with good-sized bedrooms and living areas, plus the bonus of a second living area and bedroom with own kitchen and bathroom on the lower level allowing for a dual living option.

Create your new family home, renovate the existing solid house, rent for investment or simply live in as is, the property is a direct walk to the Gold Coast Arts Centre, Turf Club, Chevron Island restaurants and Surfers Paradise Beach.

? Double height entry foyer beckons you to the upper level living

**Building Size** : 303 sqm  
**Land Size** : 506 sqm  
**View** : <https://www.willcoxestateagents.com.au/sale/qld/gold-coast/bundall/residential/house/5865959>



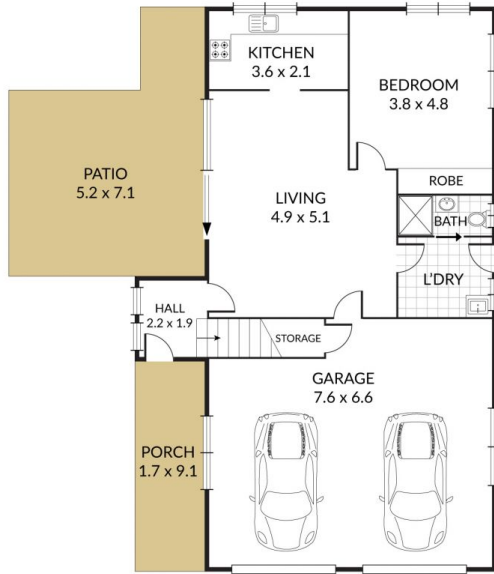
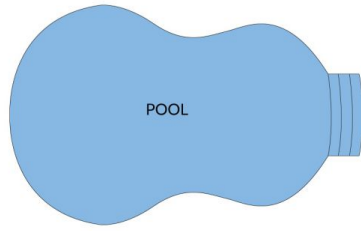
**Jesse Willcox**  
0403 039 167

Internal 201m<sup>2</sup> External 102m<sup>2</sup> Total 303m<sup>2</sup>

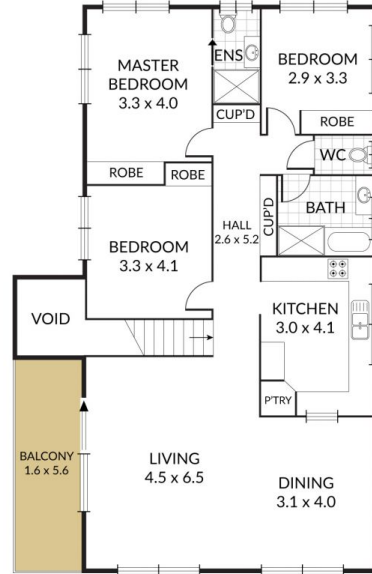
58 Slatyer Avenue, **Bundall**



4 x 3 x 2 x



GROUND FLOOR



FIRST FLOOR

NOTE: Every precaution has been taken to verify the accuracy of the above details. However, prospective purchasers are advised to make their own enquiries.