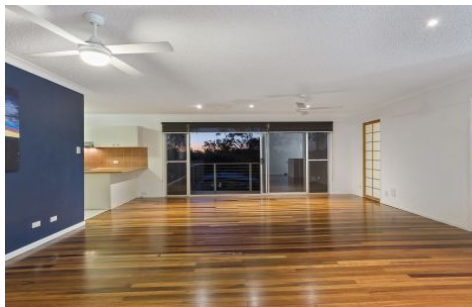


WILLCOX



10 Kathleen Avenue Southport QLD

3 2 2

Situated on the high side of the road, this double storey retreat features a private, oversized deck off the main living area allowing you to capture perfect sunsets and city views whilst relaxing with family and friends. Well maintained throughout, the home includes newly refurbished original floorboards and downstairs second living area / granny flat / retreat with kitchenette, new bathroom and own entrance.

Price : \$ 580,000

View : <https://www.willcoxestateagents.com.au/sale/qld/gold-coast/southport/residential/house/5865948>

Perfectly positioned in a family friendly cul de sac, within walking distance of TSS and the Brickworks precinct, close to dog parks, transport and the light rail.

? 536sqm high side block with treeline and city views

? Dual living potential - downstairs area with kitchenette and bathroom

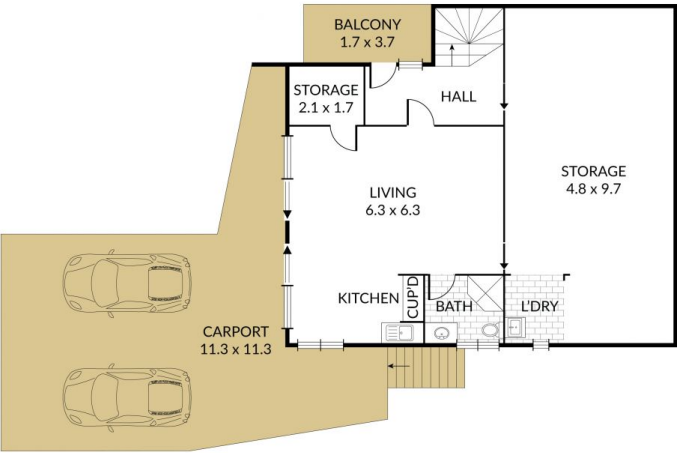
? 3 comfortable sized bedrooms with built in robes, separate study

<https://www.willcoxestateagents.com.au>

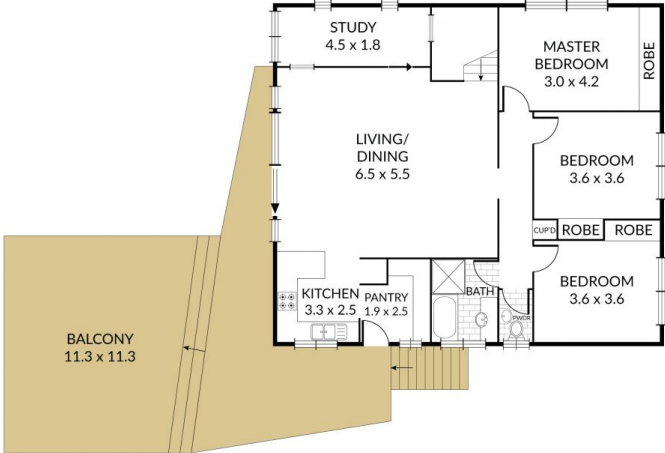
Internal 170m² External 141m² Total 311m²

10 Kathleen Avenue, **Southport QLD**

3 x  2 x  2 x 



GROUND FLOOR



FIRST FLOOR

This brochure has been printed on 100% recycled paper.
NOTE: Every precaution has been taken to verify the accuracy of the above details. However, prospective purchasers are advised to make their own enquiries.

LW