




# WILLCOX



**1 & 2/3 Melinda Street Southport QLD**

**5**  **2**  **3** 

Owners demands all offers to be presented on or before auction!

Dual living opportunity - 2 x units sold in one line - separate titles - extinguish the body corporate and make it a family home or alternatively rent out both units for an incredibly strong rental yield with capital growth - will you find a better positively geared property elsewhere?

Current rental appraisal of \$450 for upstairs and \$380-\$400 per week for downstairs being a total of approximately \$850 per week.

506m<sup>2</sup> of land backing onto the popular Keebra park and only a moments walk from the Ron Short Dog Park & Gold Coast Light Rail.

**Land Size** : 506 sqm

**View** : <https://www.willcoxestateagents.com.au/sale/qld/gold-coast/southport/residential/house/5865906>



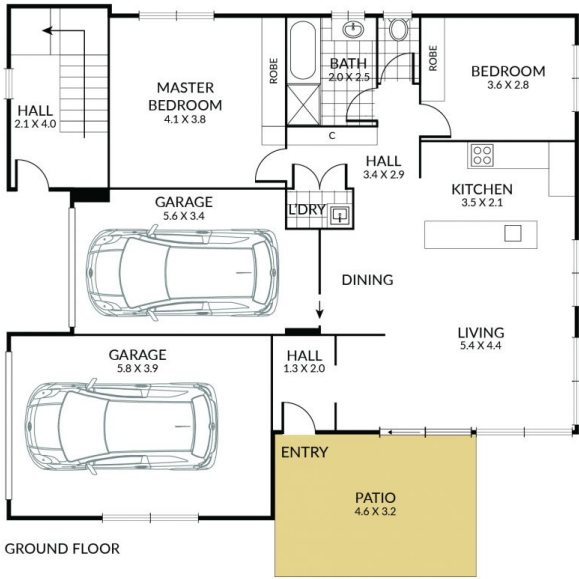
**Jesse Willcox**  
**0403 039 167**

Internal 218.71m<sup>2</sup> External 15.83m<sup>2</sup> Total 249.32m<sup>2</sup>

3 Melinda Street, Southport QLD



5 X 2 X 2 X



NOTE: Every precaution has been taken to verify the accuracy of the above details. However, prospective purchasers are advised to make their own enquiries.