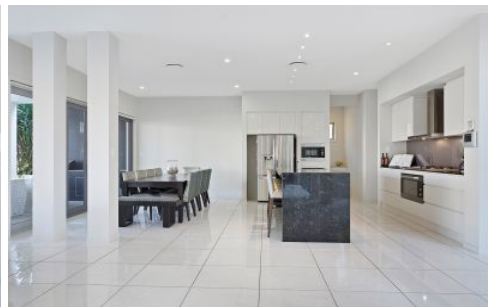


# WILLCOX



## 94 Commodore Drive Paradise Waters QLD

6 6 3

Superbly designed over a large 812 block creating a floor plan that flows seamlessly with a clever use of space in Gold Coast's most tightly held waterfront suburbs. Offering multiple living areas both inside and out including a large BBQ/entertaining space overlooking the pool and private sandy beach. The kitchen is central and equipped with the finest fittings and functionality including a large gas hob, built in appliances and walk in pantry. The media room has a built in kitchenette with wet area and fridge space facility, ideal for a growing family.

### Features:

- Large 6 bedrooms, 6 bathroom
- Commercially equipped kitchen
- Media/Games room, 3 car accommodation + additional off street

**Land Size** : 812 sqm

**View** : <https://www.willcoxestateagents.com.au/sale/qld/gold-coast/paradise-waters/residential/house/5865904>



**Jesse Willcox**  
0403 039 167

<https://www.willcoxestateagents.com.au>



NORTH

The ground floor plan features a large swimming pool at the rear, accessible via a patio (4.5 x 4.9) and a living area (4.3 x 8.0). The main living area (4.5 x 5.2) is adjacent to a courtyard (6.9 x 4.5) and a garage (8.6 x 6.4) with three parking spaces. The kitchen (5.5 x 3.7) includes a pantry (1.0 x 4.1), a linen closet, and a laundry room (L'DRY, 3.9 x 2.4). The bedroom (4.2 x 5.2) has an ensuite (ENS, 2.9 x 3.2) and a closet. The porch (6.8 x 7.9) provides an outdoor seating area. The entrance (ENTRY) leads into a hall (5.5 x 6.2) with a staircase and a powder room (P.W.D.).

**GROUND FLOOR**

PATIO 4.5 X 4.9

LIVING 4.3 X 8.0

LIVING 4.5 X 5.2

COURTYARD 6.9 X 4.5

HALL 5.5 X 6.2

ENTRY

PORCH 6.8 X 7.9

KITCHEN 5.5 X 3.7

PANTRY 1.0 X 4.1

L'DRY 3.9 X 2.4

ENS 2.9 X 3.2

CLINET

P.W.D.

GARAGE 8.6 X 6.4

POOL