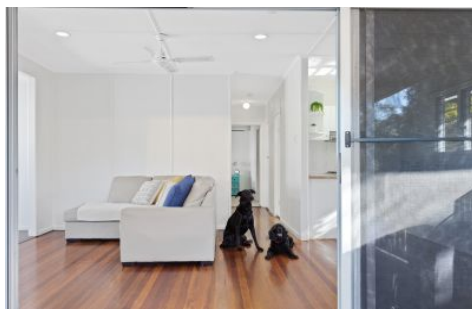


# WILLCOX



## 1/8 Dowling Drive Southport QLD

2  2  1 

This rare free-standing triplex is in one of Southport's most sought-after streets, Dowling Drive.

Featuring two oversized bedrooms, master with walk in robe & ensuite, spacious living and a modern kitchen. Entertaining area outside under the large covered deck, with low maintenance gardens. Single lock up garage and within walking distance of Chirn Park and Southport Parklands.

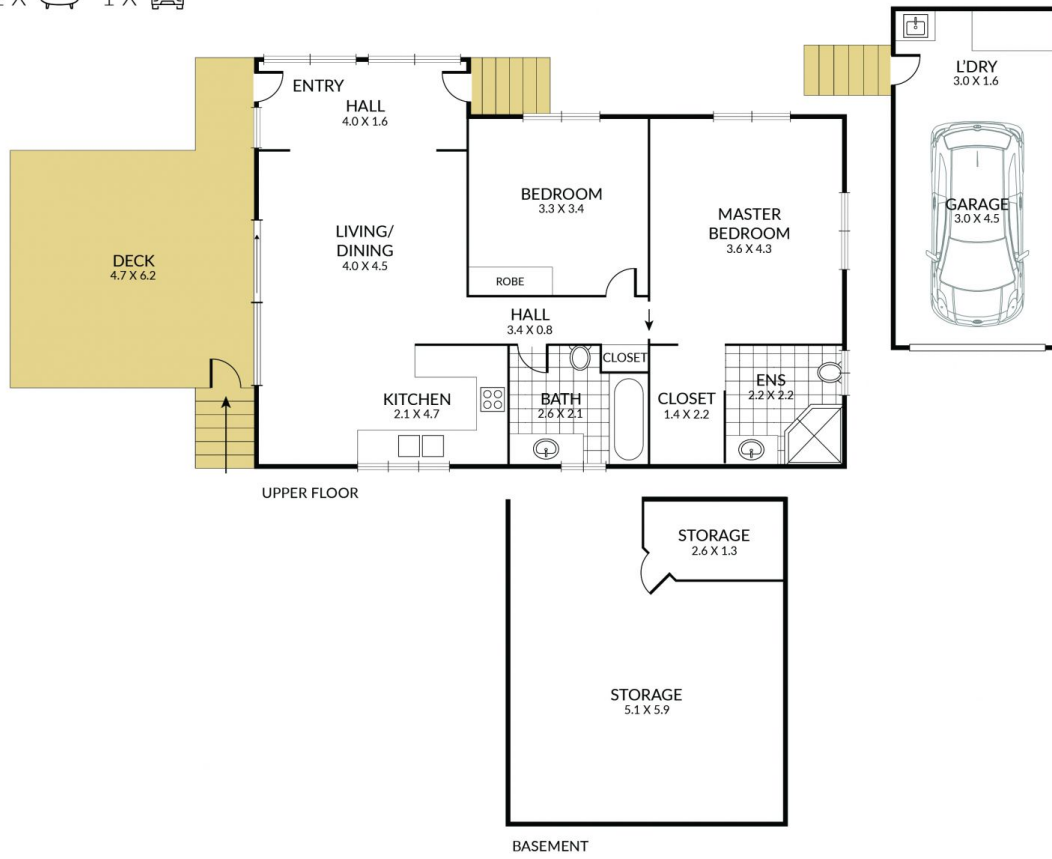
This property offers a comfortable lifestyle with every convenience that progressive central Southport continues to offer.

**Land Size** : 93 sqm  
**View** : <https://www.willcoxestateagents.com.au/sale/qld/gold-coast/southport/residential/townhouse/5865903>

Internal 102.32m<sup>2</sup> External 22.99m<sup>2</sup> Total 125.31m<sup>2</sup>

1/8 Dowling Drive, Southport QLD

2 X  2 X  1 X 



NOTE: Every precaution has been taken to verify the accuracy of the above details. However, prospective purchasers are advised to make their own enquiries.