

WILLCOX



9 Reed Street Ashmore QLD

3  2  2 

This charming family home, presented amongst extensive lawns and majestic tall trees, sits on a generous 1246 m2 site at the gateway to the fabulous Paradise Rivers Country estate, offering enviable country style living, just minutes from the heart of the Gold Coast. Beautifully maintained, this renovated family home offers trendy style, with open plan design to the important kitchen and living areas opening out to extensive undercover alfresco dining.

You will be impressed with the superior presentation commencing at the quality timber and glass feature entry door. Expect to be wowed with the sensational kitchen, the bamboo floors and generous use of Plantation shutters, all in neutral tones and light-colours promoting relaxed living throughout.

Other features include a 3kw solar inverter with 14 panels,

Building Size : 220 sqm
Land Size : 1256 sqm
View : <https://www.willcoxestateagents.com.au/sale/qld/gold-coast/ashmore/residential/house/5865901>

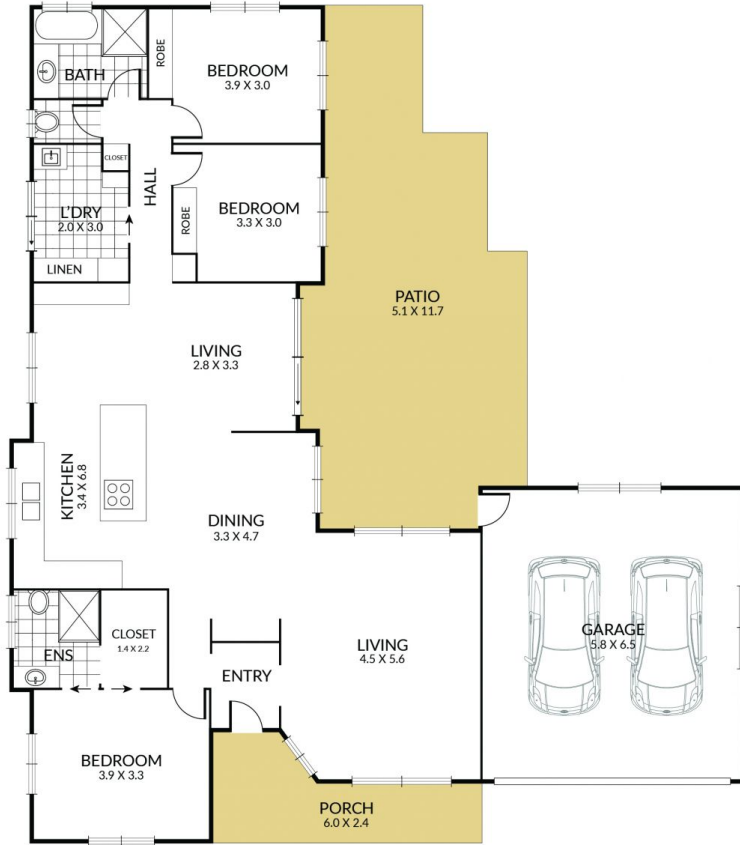
<https://www.willcoxestateagents.com.au>

Internal 164.98m² External 54.93m² Total 219.91m²

9 Reed Street, Ashmore QLD



3 X 2 X 2 X



NOTE: Every precaution has been taken to verify the accuracy of the above details. However, prospective purchasers are advised to make their own enquiries.